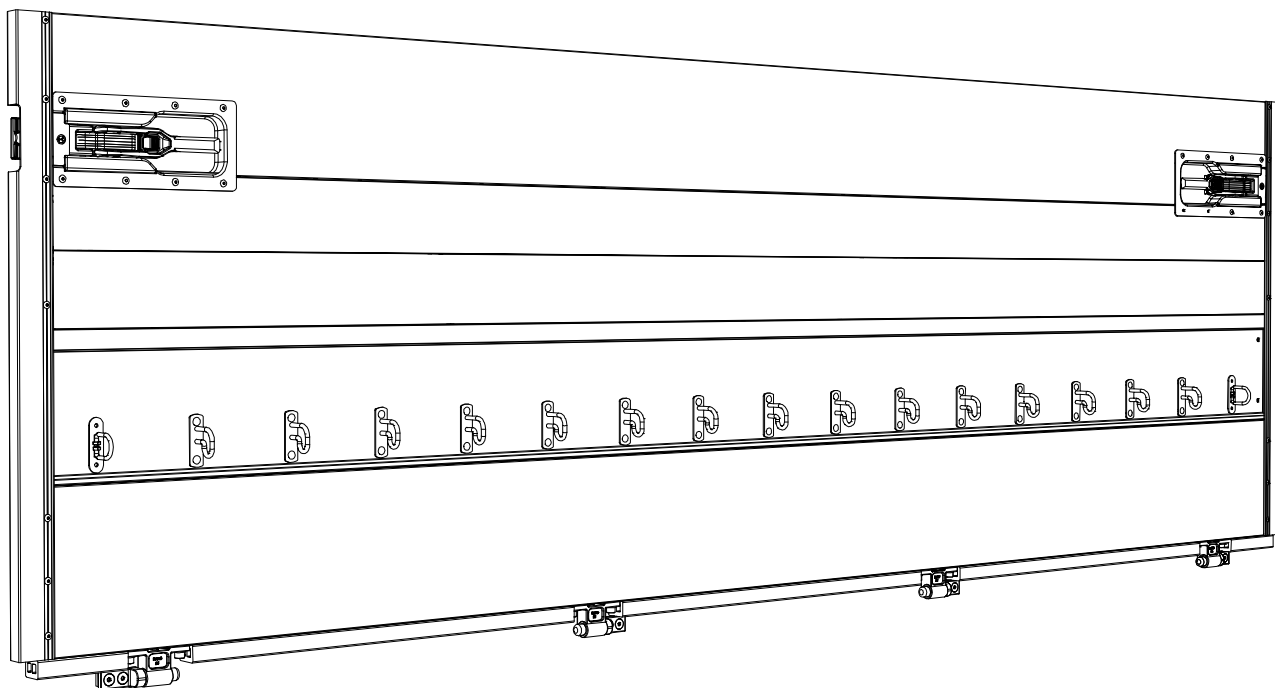


Spare parts drop side



Translation of the original spare parts list

Contents

1 Explanation regarding order of spare parts	04
2 Snap lock drop side with cramp profile pos. 2 for T-bolt locking.....	05
3 Snap lock drop side with cramp profile pos. 2 for integrated bolt locking.....	06
4 Snap lock drop side with cramp profile pos. 3 for T-bolt locking	07
5 Rear snap lock drop side with cramp profile pos. 2 for T-bolt locking and stanchion 50	08
6 Rear snap lock drop side with cramp profile pos. 2 for integrated bolt locking and stanchion 50	09
7 Rear snap lock drop side with cramp profile pos. 3 for T-bolt locking and stanchion 50	10
8 Snap lock drop side with tie-down rail pos. 2 for T-bolt locking left or right	11
9 Snap lock drop side with tie-down rail pos. 3 for T-bolt locking left or right	12
10 Snap lock drop side with tie-down rail pos. 2 and pos. 3 for T-bolt locking left or right	13
11 Snap lock drop side with tie-down rail pos. 2 and cramp profile pos. 3 for T-bolt locking left or right	14
12 Snap lock drop side with tie-down rail pos. 3 and cramp profile pos. 2 for T-bolt locking left or right	15
13 Snap lock drop side smooth for T-bolt locking	16
14 Hinged bearing	17
15 Further mounting parts	19
16 Mounting kits.....	20
17 KIT2 connections	22
18 Tarp cramps kit	24
19 Annexes	25

Explanation about ordering spare parts

Pictures shall be regarded as symbolic rather than binding.

We reserve the right of possible changes.

Designations:

1. Left
2. Right
3. Front
4. Back

should be understood in the sense of the driving direction.

Diverted spare parts are only available in the applicable repair kit.

Spare parts depending on height, for example corner stanchions or intermediate profiles, can only

be ordered with the applicable production order number.

Copyright:

TSE Trailer System Engineering GmbH & Co. KG hold the copyright for this spare parts list.

Order:

Please, send spare part orders directly to the sales department for spare parts at TSE.

TSE Trailer System Engineering GmbH & Co. KG
Bei der Mühle 4
72365 Ratshausen
Germany

Phone: +49 (0)7427 / 92 33-0

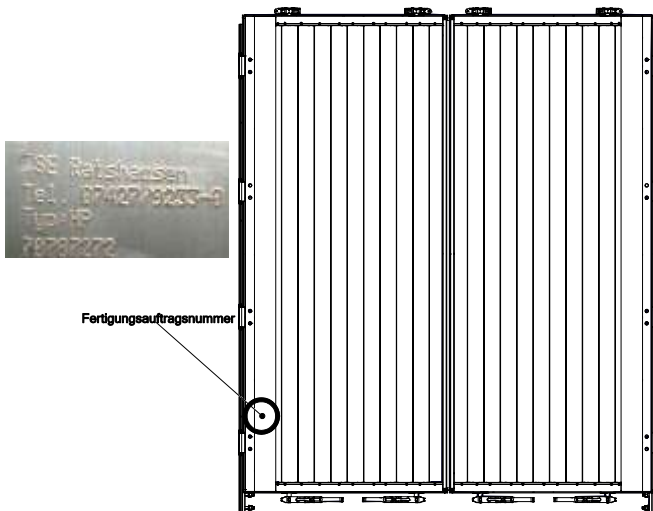
Fax: +49 (0)7427 / 92 33-75

Email: verkauf@tse-trailersystems.de

Homepage: www.tse-trailersystems.de

be ordered with the applicable production order number.

Label of production order number



View on snap lock of drop side with cramp profile pos. 2 for T-bolt locking
Profile positions (TSE no.: according to production order number)

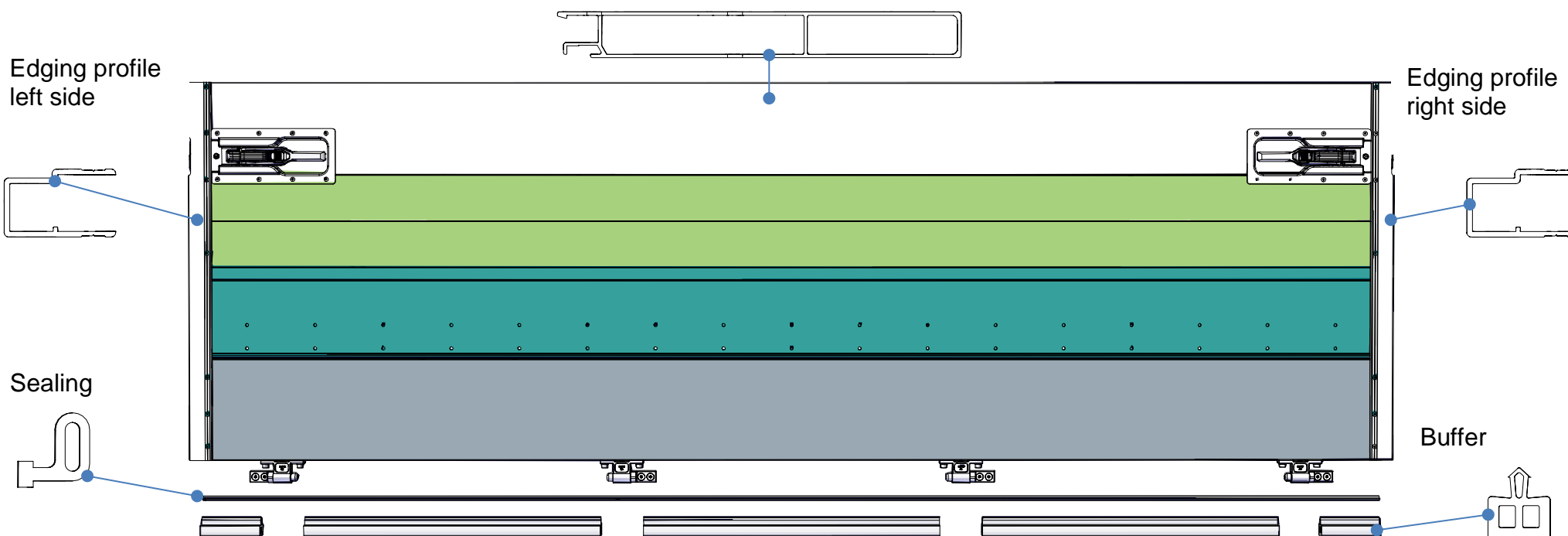
End profile upside

Edging profile
left side

Edging profile
right side

Sealing

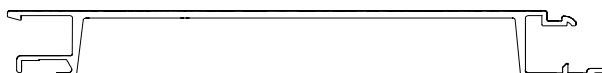
Buffer



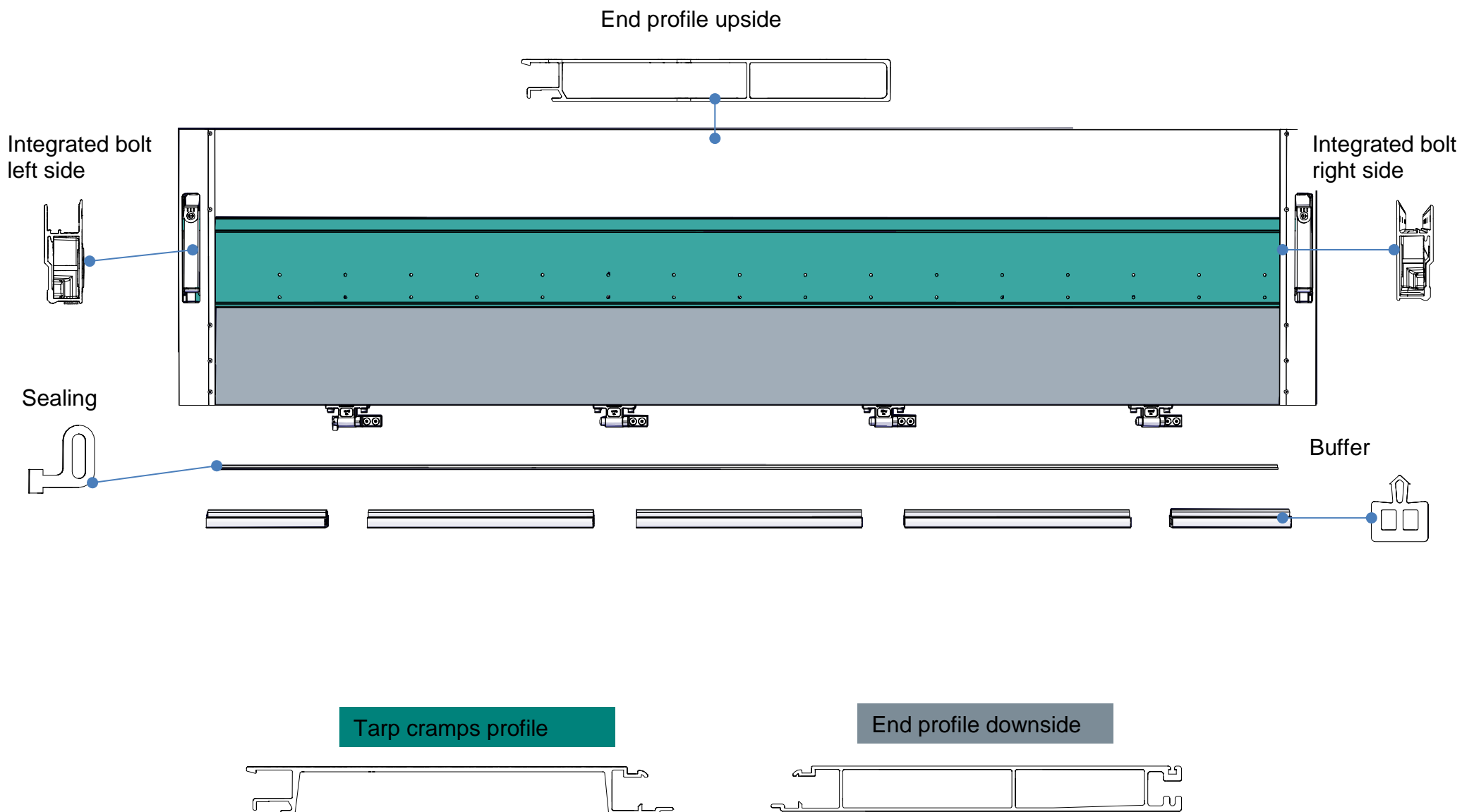
Intermediate profile 200mm

Tarp cramps profile

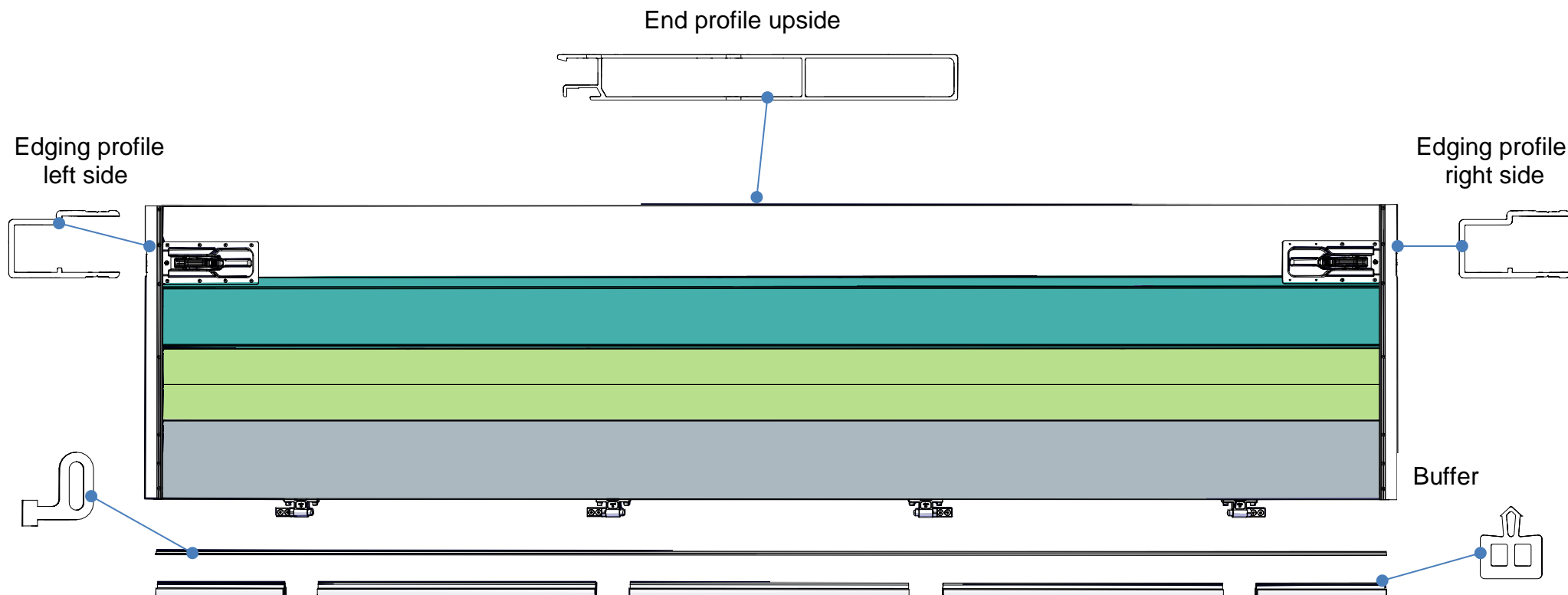
End profile downside



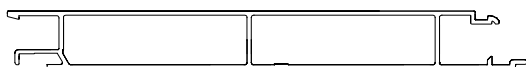
View on snap lock of drop side with cramp profile pos. 2 for integrated bolt locking
Profile positions (TSE no.: according to production order number)



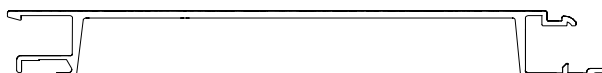
View on snap lock of drop side with cramp profile pos. 3 for T-bolt locking
Profile positions (TSE no.: according to production order number)



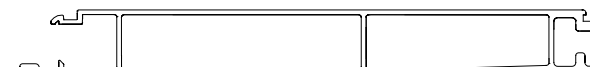
Intermediate profile 200mm



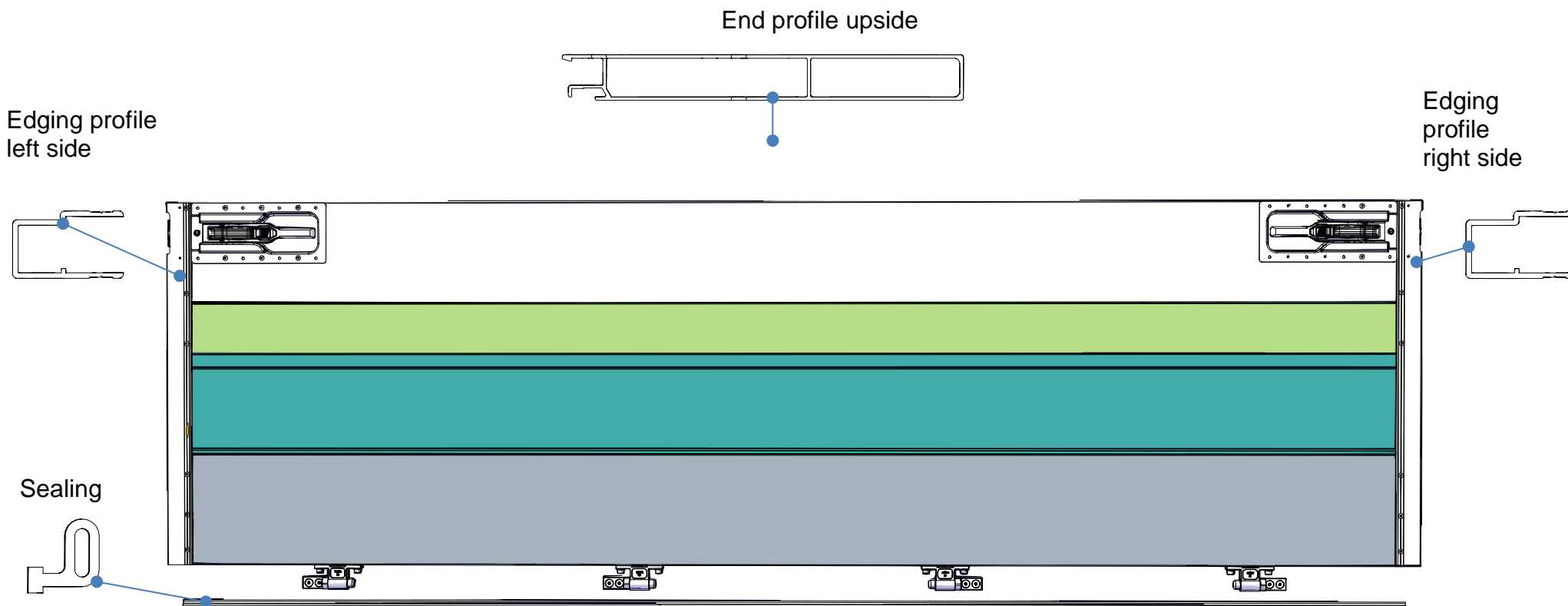
Tarp cramps profile



End profile downside



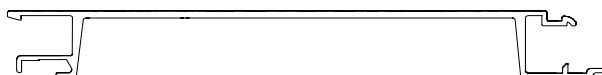
View on snap lock of rear drop side with cramp profile pos. 2 for T-bolt locking and stanchion 50
Profile positions (TSE no.: according to production order number)



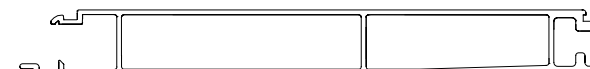
Intermediate profile 200mm



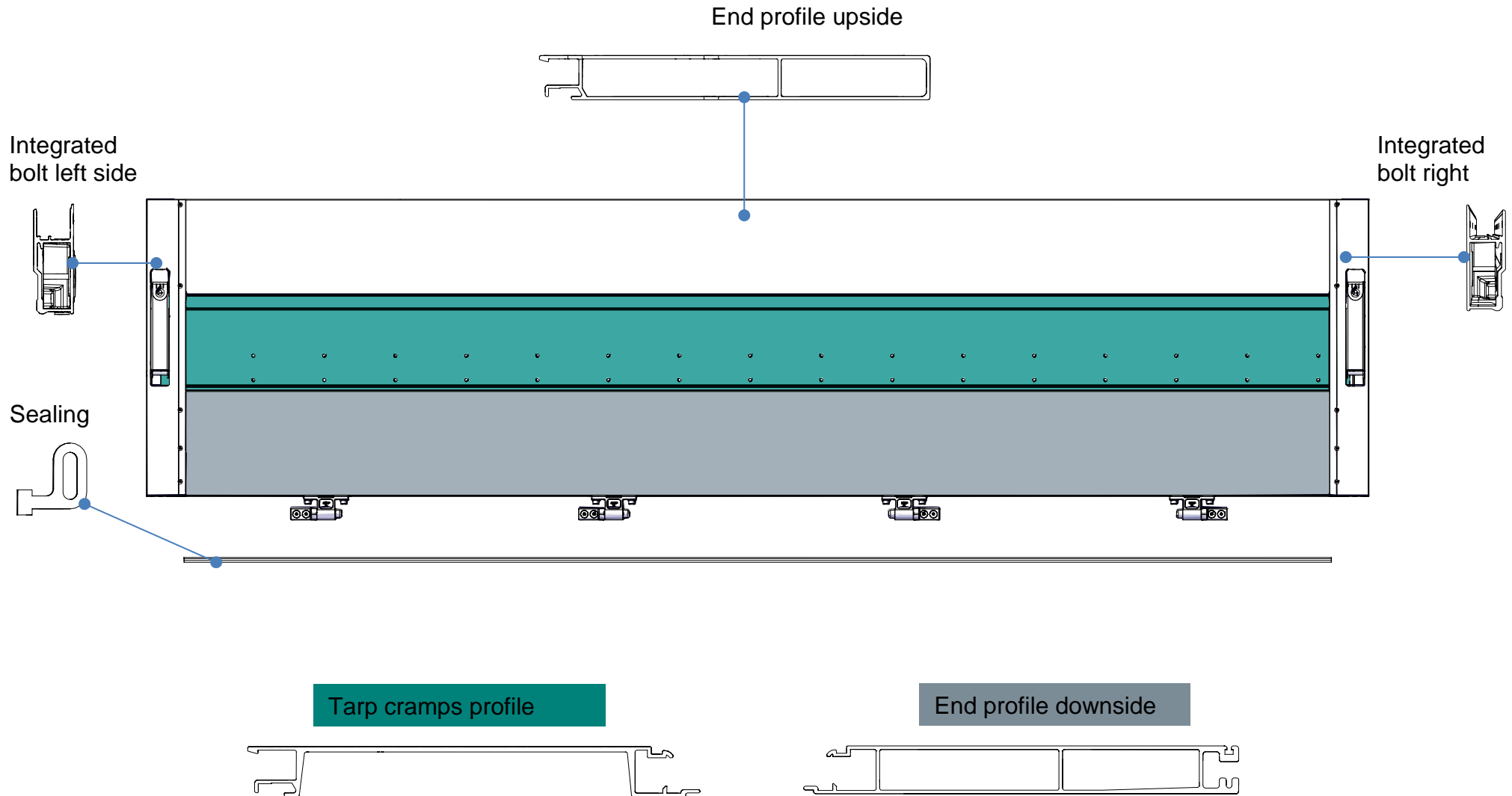
Tarp cramps profile



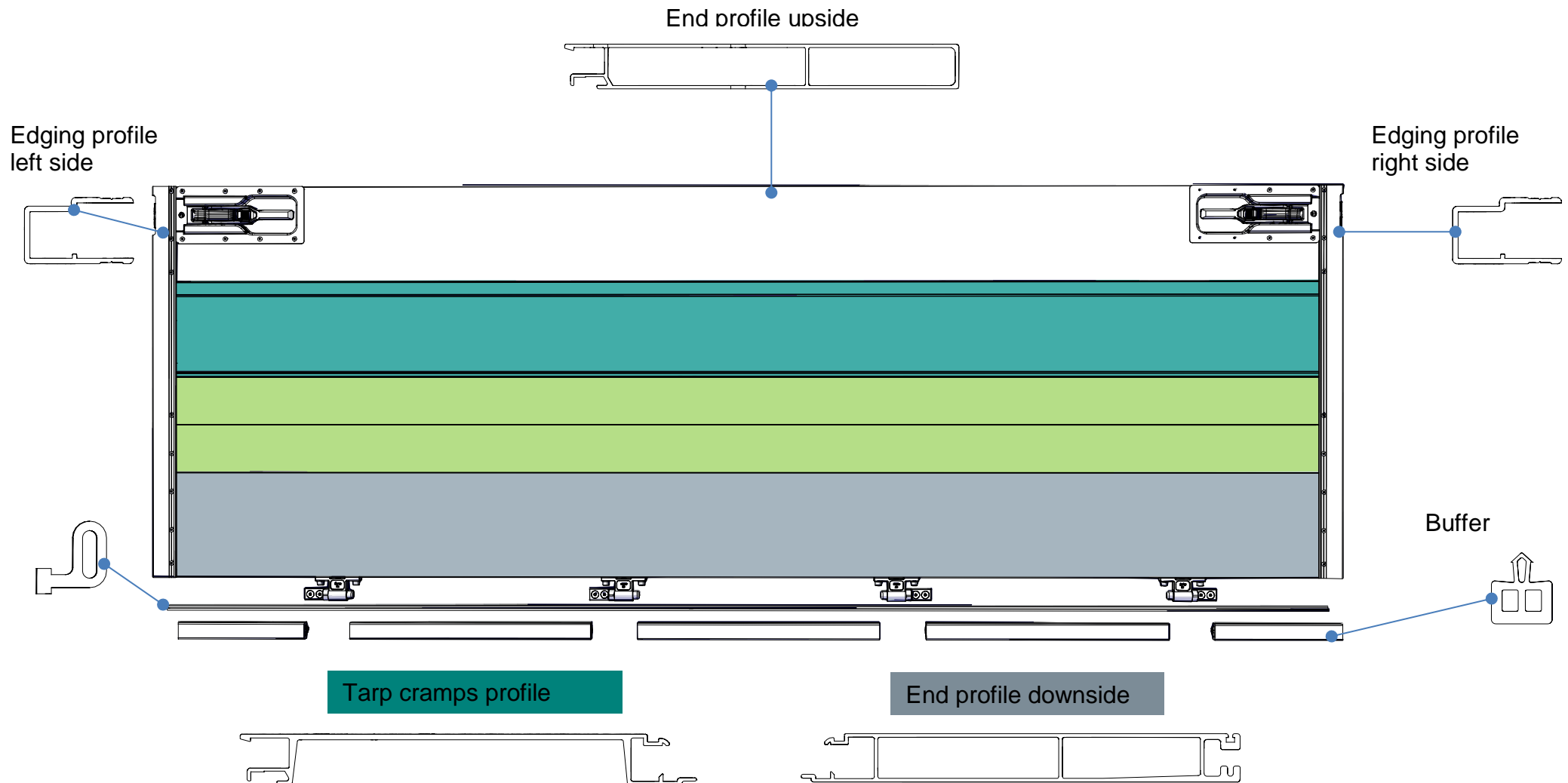
End profile downside



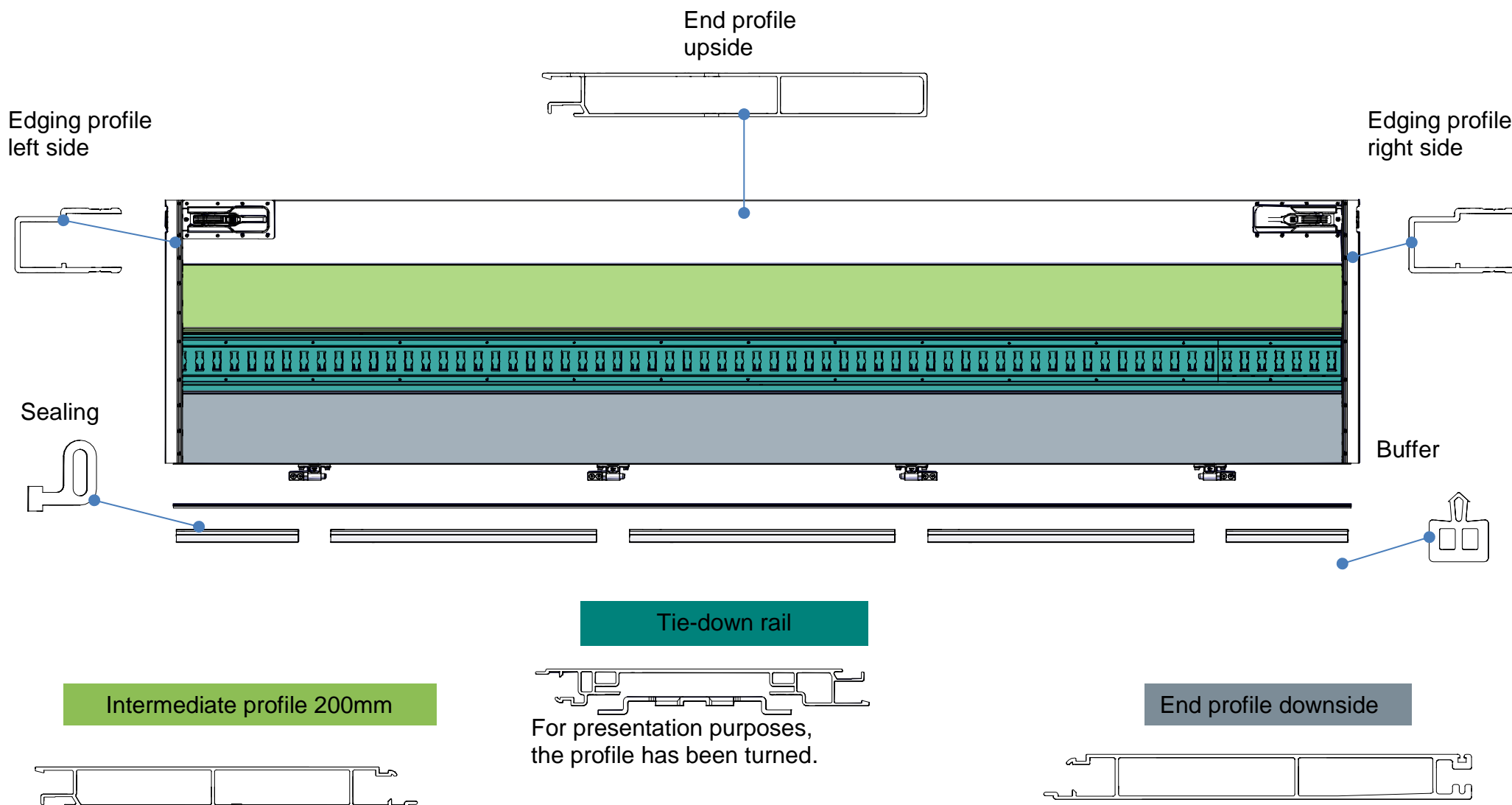
View on snap lock of rear drop side with cramp profile pos. 2 for integrated bolt locking and stanchion 50
Profile positions (TSE no.: according to production order number)



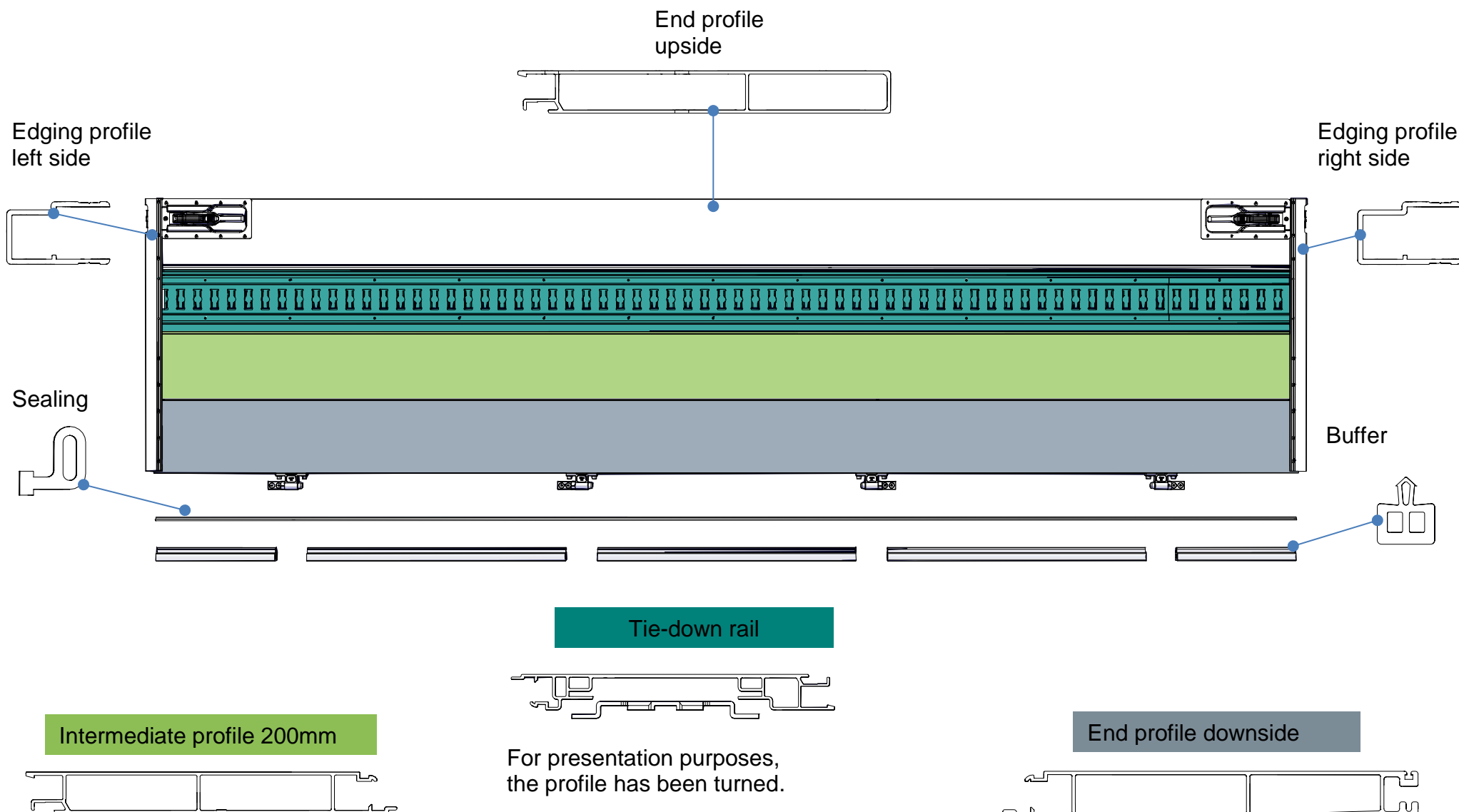
View on snap lock of rear drop side with cramp profile pos. 3 for T-bolt locking and stanchion 50
Profile positions (TSE no.: according to production order number)



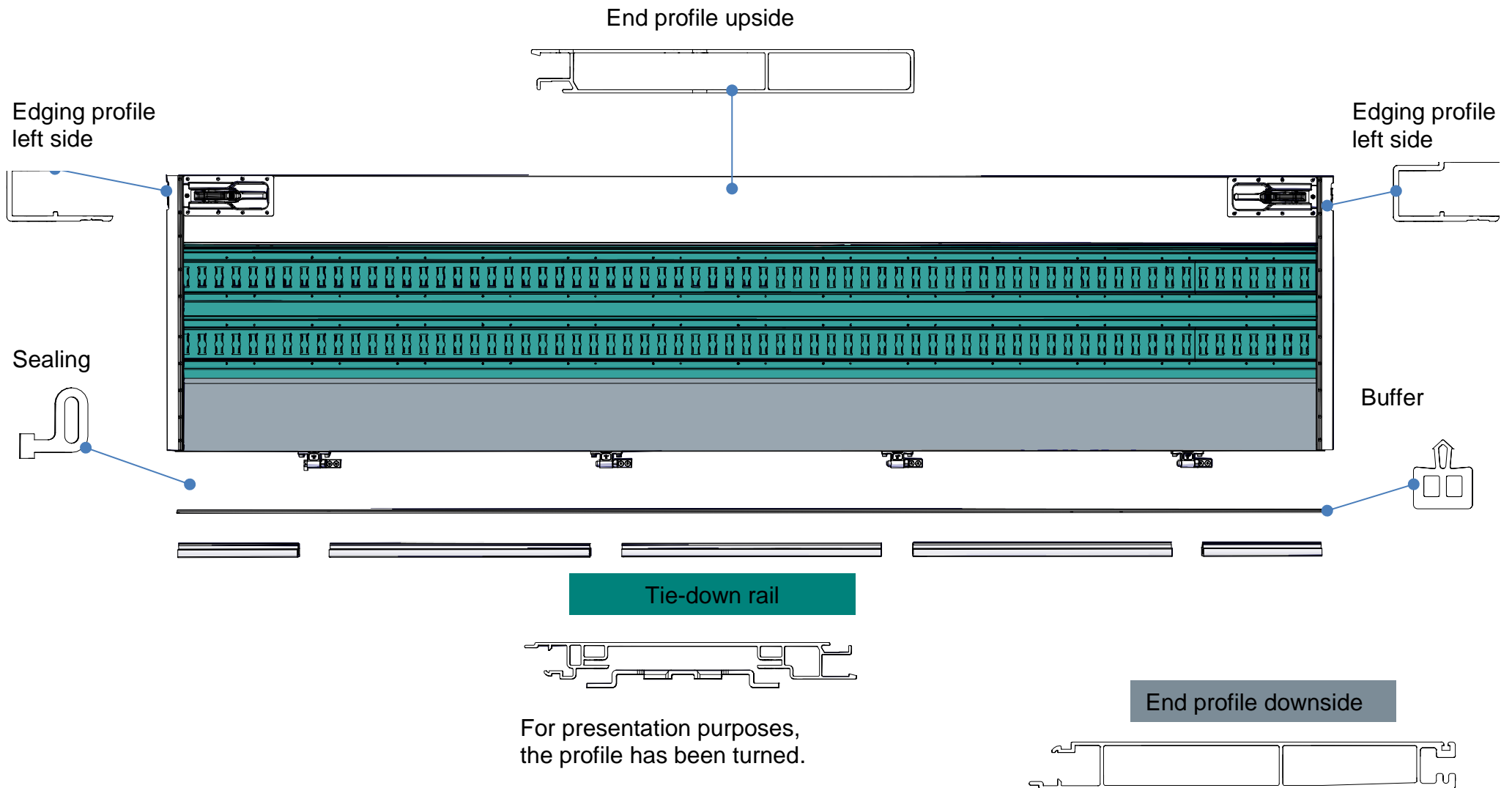
View on snap lock of drop side with tie-down rail pos. 2 for T-bolt locking left or right
Profile positions (TSE no.: according to production order number)



View on snap lock of drop side with tie-down rail pos. 3 for T-bolt locking left or right
Profile positions (TSE no.: according to production order number)



View on snap lock of drop side with tie-down rail pos. 2 and pos. 3 for T-bolt locking left or right
Profile positions (TSE no.: according to production order number)



View on snap lock of drop side with tie-down rail pos. 2 and tarp cramp profile pos. 3 for T-bolt locking
left or right

Profile positions (TSE no.: according to production order number)

End profile upside

Edging profile
left side

Edging profile
right side

Sealing

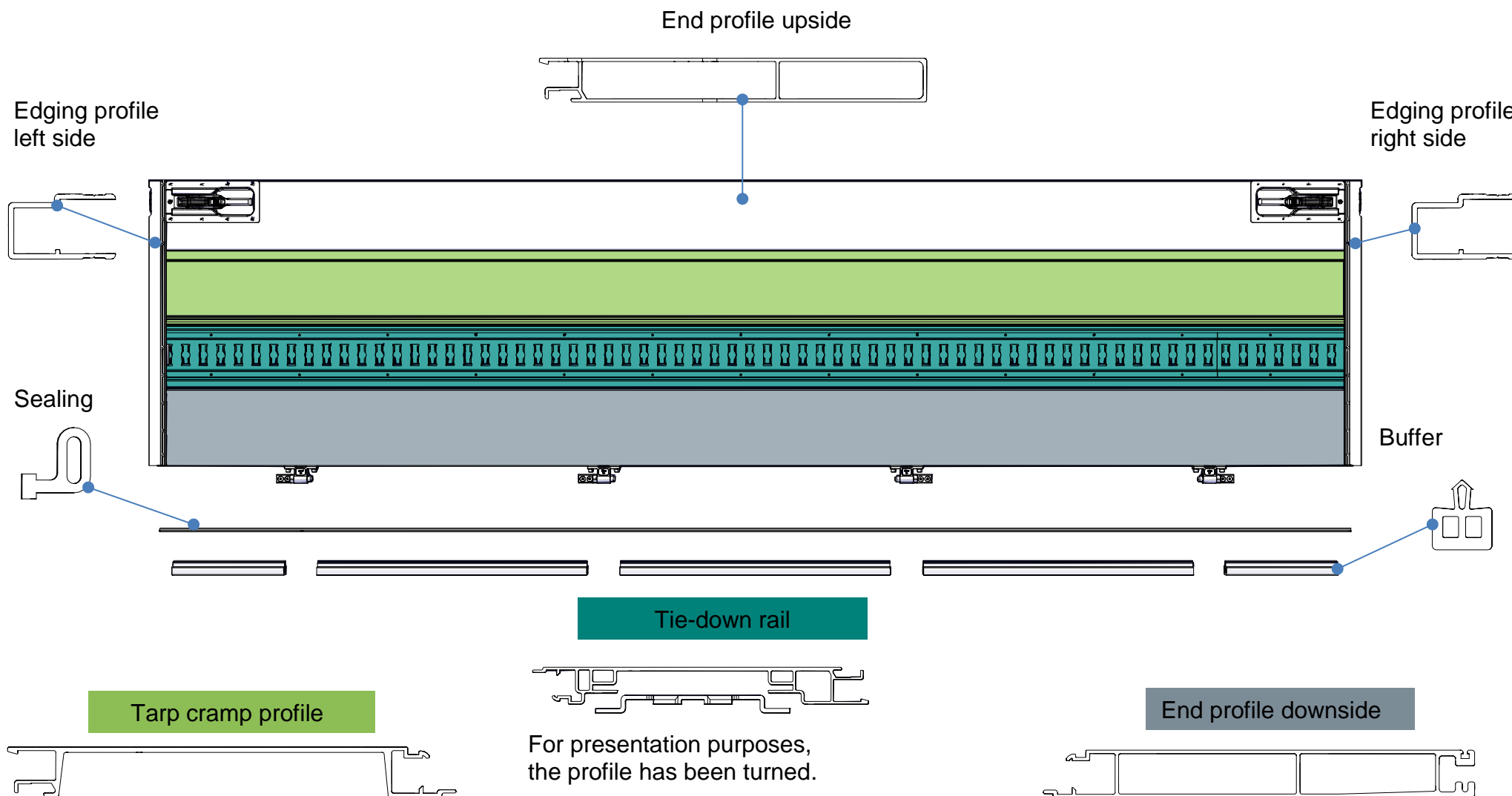
Buffer

Tie-down rail

Tarp cramp profile

End profile downside

For presentation purposes,
the profile has been turned.



View on snap lock of drop side with tie-down rail pos. 3 and tarp cramp profile pos. 2 for T-bolt locking
left or right

Profile positions (TSE no.: according to production order number)

End profile upside

Edging profile
left side

Edging profile
Right side

Sealing

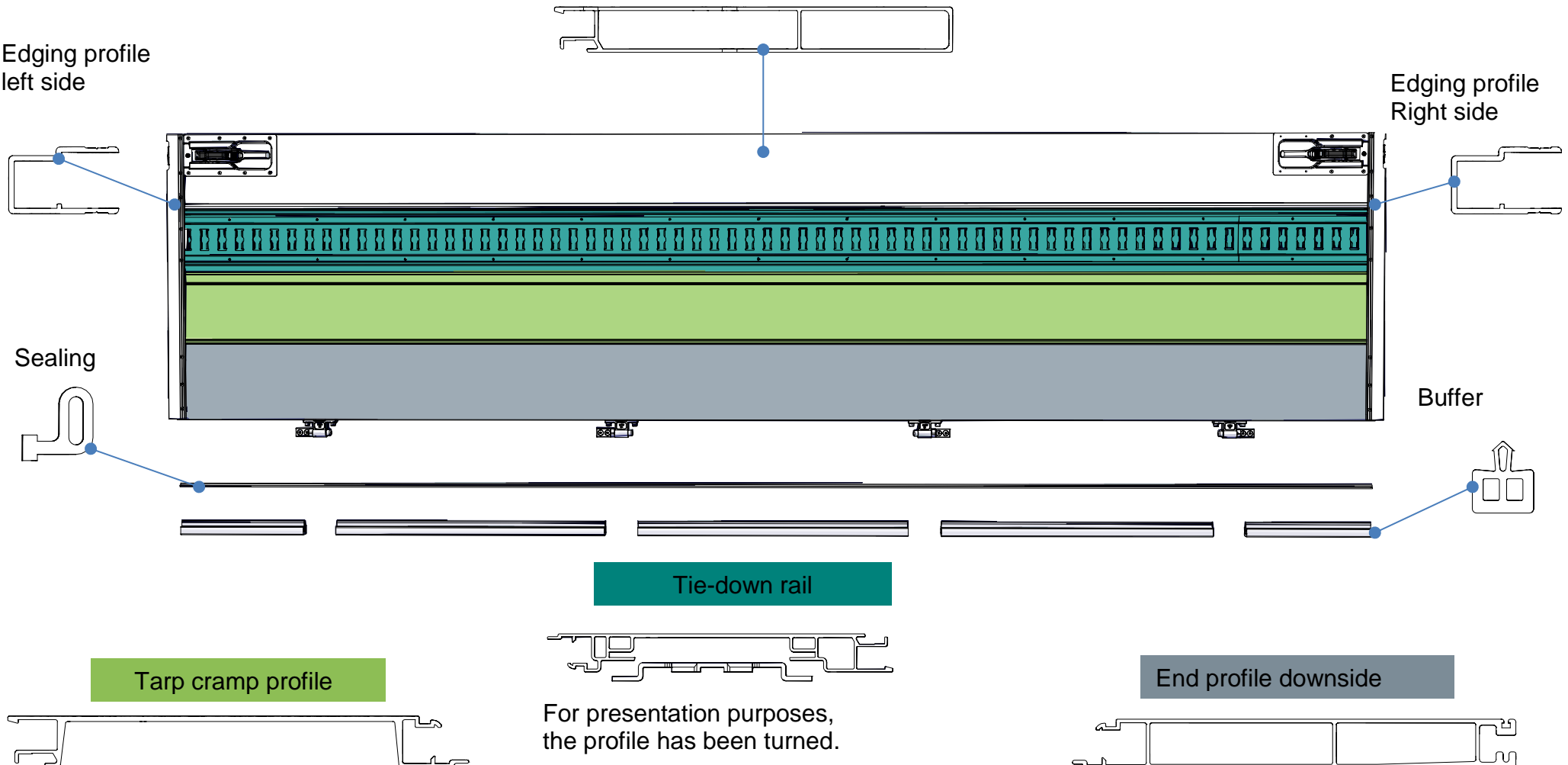
Buffer

Tie-down rail

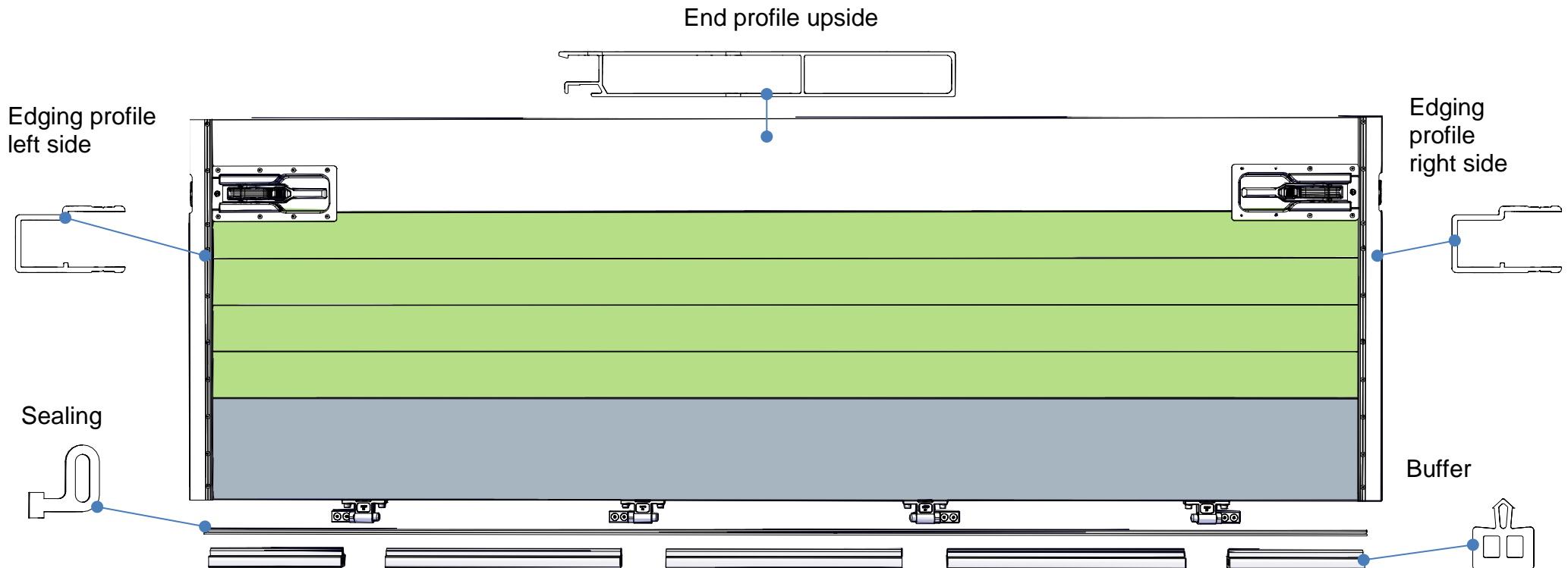
Tarp cramp profile

End profile downside

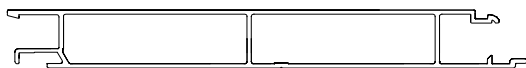
For presentation purposes,
the profile has been turned.



View on snap lock of drop side, smooth, for T-bolt locking
Profile positions (TSE no.: according to production order number)



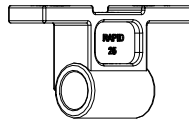
Intermediate profile 200mm



End profile downside

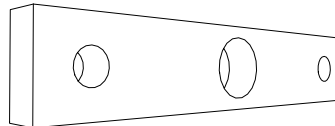


Hinged bearing of drop side



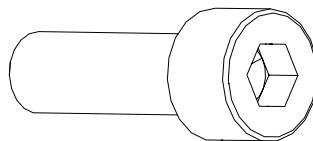
Number	Remarks
1144198	Included in the applicable drop sides

Threaded plate for hinged bearing



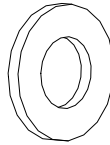
Number	Remarks
1113090	Included in the applicable drop sides

Cylinder screw with internal hex M8x25



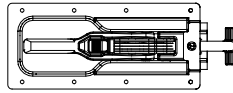
Number	Remarks
000-06.282	Included in the applicable drop sides

Washer A8.4



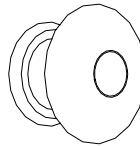
Number	Remarks
000-06.061	Included in the applicable drop sides

T-bolt lock



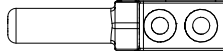
Number	Remarks
1144660	Included in the applicable drop sides

Monobolt pop rivet 5x10



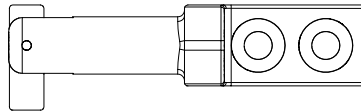
Number	Remarks
1116769	Included in the applicable drop sides

Hinge pin without catch nose



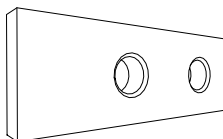
Number	Remarks
-	Included in mounting kit TSE no.: 1252986
-	Included in mounting kit TSE no.: 1166951

Hinge pin with catch nose

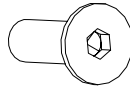


Number	Remarks
-	Included in mounting kit TSE no.: 1252986
-	Included in mounting kit TSE no.: 1166951

Threaded plate for hinge pin

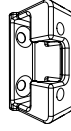


Number	Remarks
-	Included in mounting kit TSE no.: 1252986
-	Included in mounting kit TSE no.: 1166951

Countersunk screw with internal hex M8x25

Number	Remarks
-	Included in mounting kit TSE no.: 1252986
-	Included in mounting kit TSE no.: 1166951

Stanchion pocket for T-bolt locking



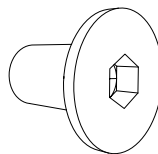
Number	Remarks
-	Included in KIT2 connections TSE no.: 1166952

Drop side counterbearing



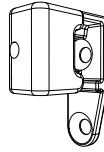
Number	Remarks
-	Included in KIT2 connections TSE no.: 1166952
-	Included in KIT2 connections TSE no.: 1166954

Countersunk screw with internal hex M8x16



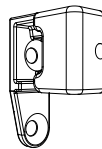
Number	Remarks
-	Included in KIT2 connections TSE no.: 1166952
-	Included in KIT2 connections TSE no.: 1166954

Locking counterbearing left side



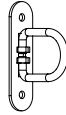
Number	Remarks
-	Included in KIT2 connections TSE no.: 1166954

Locking counterbearing right side



Number	Remarks
-	Included in KIT2 connections TSE no.: 1166954

Bracket cramp



Number	Remarks
-	Included in tarp cramp kit TSE no.: 1329812

Bracket cramp with hole pattern



Number	Remarks
-	Included in tarp cramp kit TSE no.: 1329812

Rivet



Number	Remarks
-	Included in tarp cramp kit TSE no.: 1329812

This image shows a single sheet of white paper with horizontal ruling lines. The lines are evenly spaced and run across the width of the page. There are no margins, text, or other markings on the paper.

Revision status

Revision status	Kind of change	Date	Name
00	New creation of spare part list	23 July 2018	Dingler / Maier