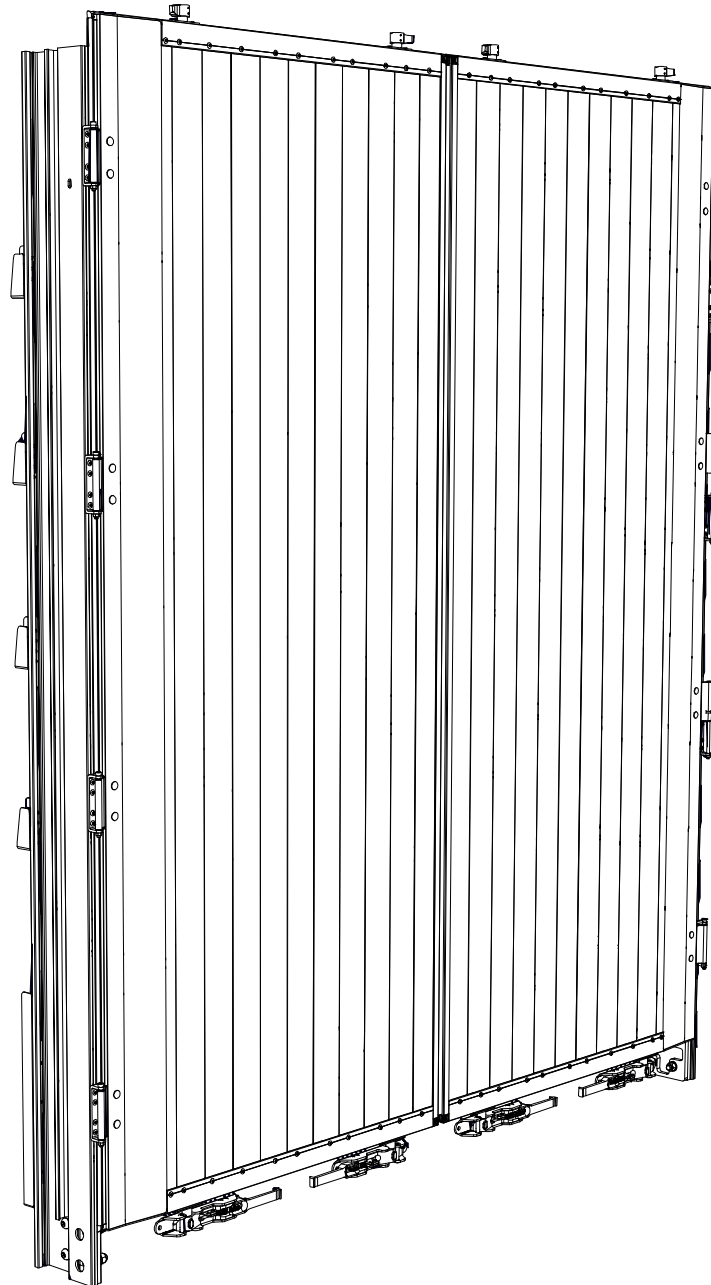


Spare parts rear portal and double winged portal



Translation of the original spare parts list



Contents

1 General	04
2 Overview of door leaves	05
3 Overview of profiles	06
4 Overview of locking rods	07
5 Overview of add-on parts	11
6 Overview of lifting systems	13
7 Overview of long stroke locking device (PR only)	15
8 Overview of T-bolt locking device (PR only)	17
9 Repair kit corner stanchion of curtainsider left or right, stanchion 35-37, anodized	18
10 Repair kit corner stanchion of curtainsider left or right, stanchion 35-37, natural	24
11 Repair kit corner stanchion of drop sider left or right, stanchion 35-37, anodized	30
12 Repair kits for sealings for portal complete/portal left/portal right/door outside/sealing bracket	36
13 Repair kit for mono-joint for door hinge anodized or natural	38
14 Repair kit top part slat pocket kit	41
15 Mounting kit for 50s stanchion	43
16 Pastore shutter	46
17 Appendix	48

Explanation about ordering spare parts

Pictures shall be regarded as symbolic rather than binding.

We reserve the right of possible changes.

Designations:

1. Left
2. Right
3. Front
4. Back

should be understood in the sense of the driving direction.

Diverted spare parts are only available in the applicable repair kit.

Spare parts depending on height, for example corner stanchions or intermediate profiles, can only

be ordered with the applicable production order number.

Copyright:

TSE Trailer System Engineering GmbH & Co. KG hold the copyright for this spare parts list.

Order:

Please, send spare part orders directly to the sales department for spare parts at TSE.

TSE Trailer System Engineering GmbH & Co. KG
Bei der Mühle 4
72365 Ratshausen
Germany

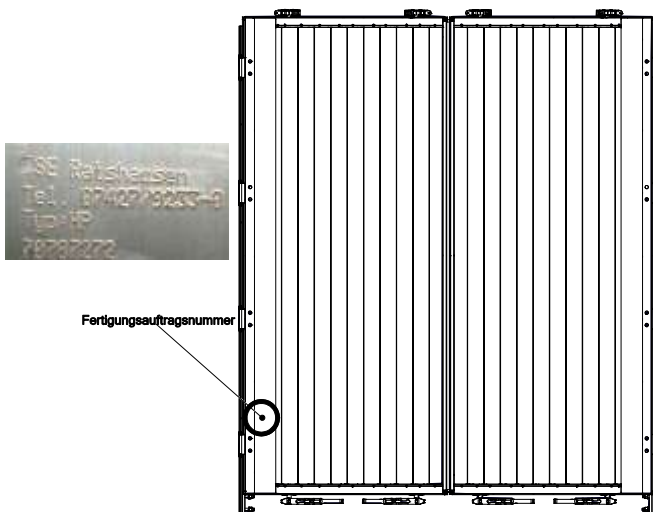
Phone: +49 (0)7427 / 92 33-0

Fax: +49 (0)7427 / 92 33-75

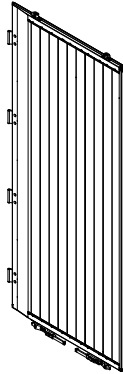
Email: verkauf@tse-trailersystems.de

Homepage: www.tse-trailersystems.de
be ordered with the applicable production order number.

Label of production order number

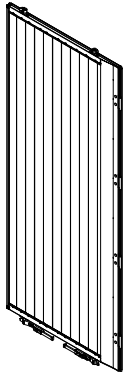


Rear portal III, door leaf complete standard left side



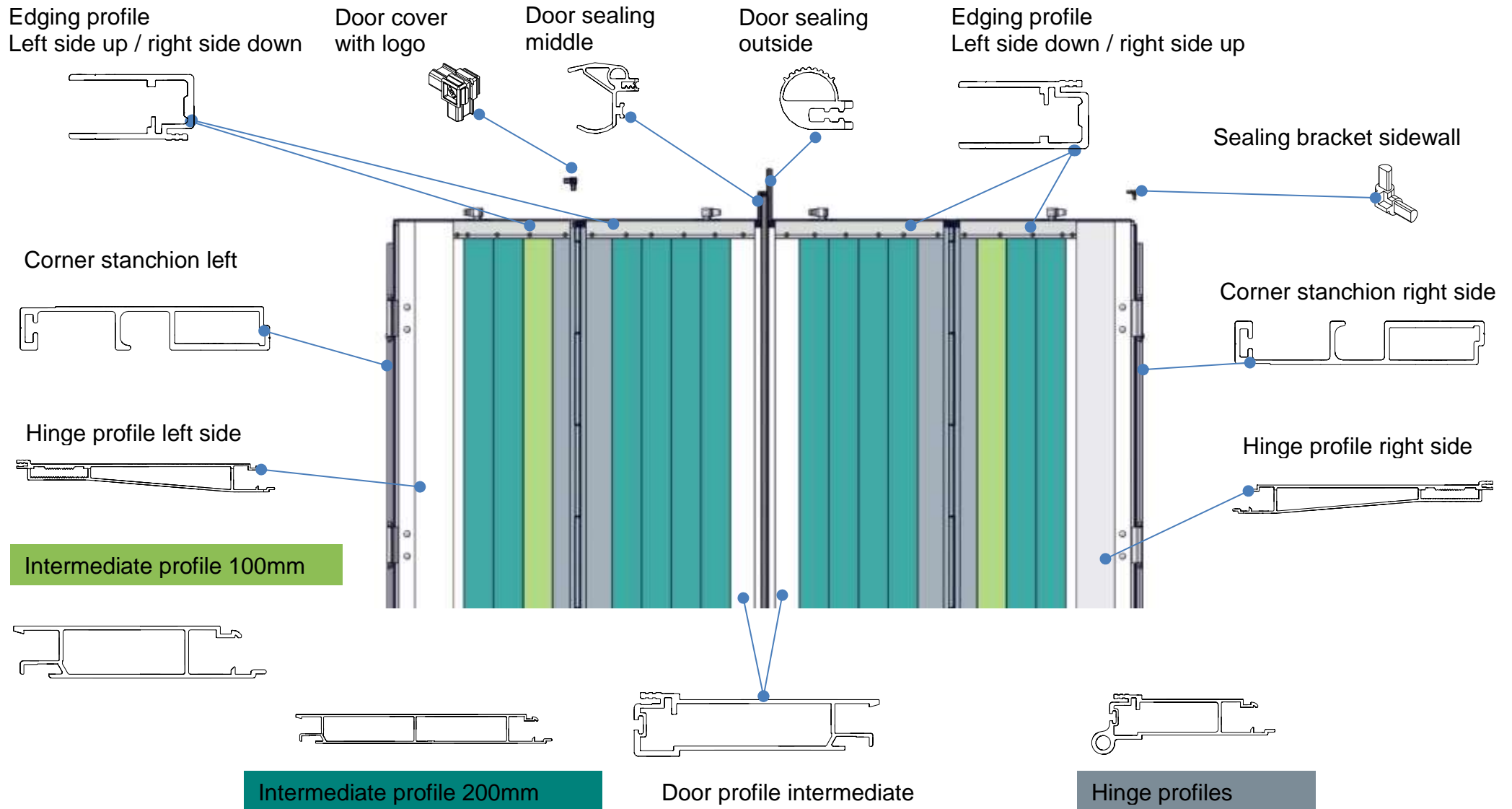
Number	Remarks
Depending on production order number	

Rear portal III, door leaf complete standard right side

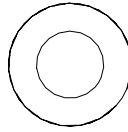


Number	Remarks
Depending on production order number	

View Profile Positions (TSE No.: according to order number)

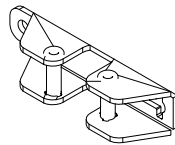


Locking rod rear portal DIN671



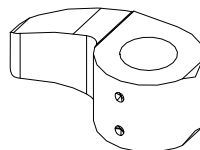
Number	Remarks
201-53.042	

Counter bearing of locking upside left / right side



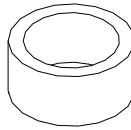
Number	Remarks
201-53.066	

Locking cam upside left / right side



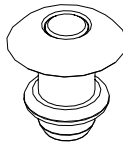
Number	Remarks
201-53.067	

Spacer sleeve upside for locking rod



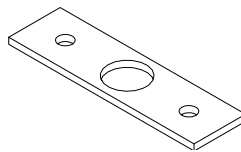
Number	Remarks
201-53.009	

Hemlok rivet, 6.5F, KL-BER4.8-6.8mm



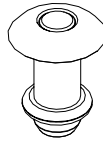
Number	Remarks
022210-0815	

Bearing plate for locking rod



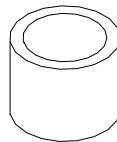
Number	Remarks
201-53.041	

Hemlok rivet, 6.5F, KL-BER8.8-10.8mm



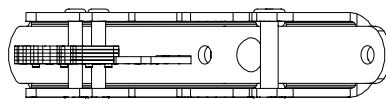
Number	Remarks
2221-0819	

Spacer sleeve downside for locking rod



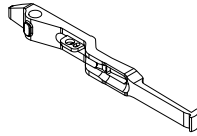
Number	Remarks
201-53.008	

Counter bearing of locking downside left / right side



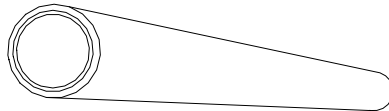
Number	Remarks
201-53.068	

Hand lever downside left and right side



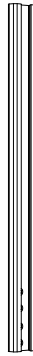
Number	Remarks
201-53.069	

Shrinking hose for locking rod



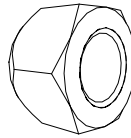
Number	Remarks
000-06.396	

Slider backside HP stanchion 37



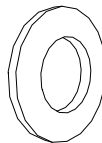
Number	Remarks
240-53.009	

Hexagon nut M 16

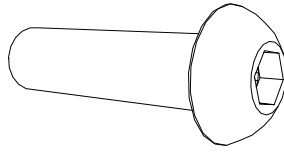


Number	Remarks
000-06.054	

Washer B 17



Number	Remarks
000-06.062	

Fillister head screw M16x60

Number	Remarks
1113004	

Zebra Bond + Seal 310 ml

Number	Remarks
000-06.101	

Liftmaster



Number	Remarks
1119463	Complete, including mounting material

Compact hydraulics



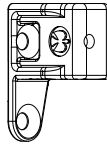
Number	Remarks
1250648	Complete, including mounting material

Central hydraulics



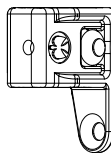
Number	Remarks
1160042	

Counter bearing of locking left side (long stroke and PR only)



Number	Remarks
1162355	

Counter bearing of locking right side (long stroke and PR only)

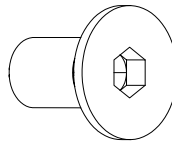


Number	Remarks
1162356	

Threaded plate (PR only)

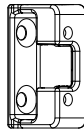


Number	Remarks
1181096	

Countersunk screw M8x16 (PR only)

Number	Remarks
1161504	

T-bolt stanchion pocket (PR only)



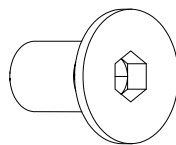
Number	Remarks
1162355	Complete, including mounting material

Threaded plate (PR only)



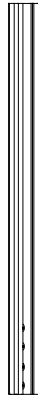
Number	Remarks
1181096	

Countersunk screw M8x16 (PR only)



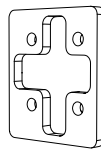
Number	Remarks
1161504	

Slider 37 stanchion



Number	Remarks
-	Included in corner stanchion repair kit CS left anodized 1225170
-	Included in corner stanchion repair kit CS right anodized 1225171

Spacer plate



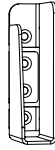
Number	Remarks
-	Included in corner stanchion repair kit CS left anodized 1225170
-	Included in corner stanchion repair kit CS right anodized 1225171

Slat pocket left / right side long



Number	Remarks
-	Included in corner stanchion repair kit CS left anodized 1225170
-	Included in corner stanchion repair kit CS right anodized 1225171

Top part slat pocket upside front right / backside left side



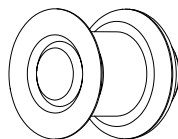
Number	Remarks
-	Included in corner stanchion repair kit CS left anodized 1225170

Top part slat pocket upside front left / backside right side



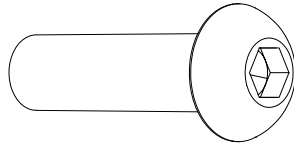
Number	Remarks
-	Included in corner stanchion repair kit CS right anodized 1225171

BS rivet, KB4.8-6.8mm



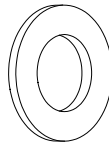
Number	Remarks
-	Included in corner stanchion repair kit CS left anodized 1225170
-	Included in corner stanchion repair kit CS right anodized 1225171

Fillister head screw with internal hex M16x60



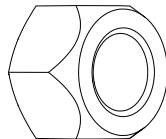
Number	Remarks
1181096	

Washer B17



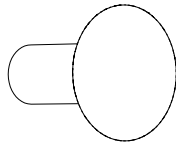
Number	Remarks
-	Included in corner stanchion repair kit CS left anodized 1225170
-	Included in corner stanchion repair kit CS right anodized 1225171

Hexagon nuts M 16



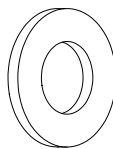
Number	Remarks
-	Included in corner stanchion repair kit CS left anodized 1225170
-	Included in corner stanchion repair kit CS right anodized 1225171

Carriage bolt without nut M10x25



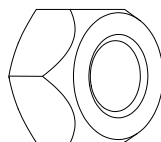
Number	Remarks
-	Included in corner stanchion repair kit CS left anodized 1225170
-	Included in corner stanchion repair kit CS right anodized 1225171

Washer A10.5



Number	Remarks
-	Included in corner stanchion repair kit CS left anodized 1225170
-	Included in corner stanchion repair kit CS right anodized 1225171

Hexagon nut M10



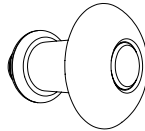
Number	Remarks
-	Included in corner stanchion repair kit CS left anodized 1225170
-	Included in corner stanchion repair kit CS right anodized 1225171

Hinged bearing



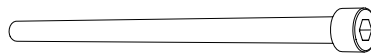
Number	Remarks
-	Included in corner stanchion repair kit CS left anodized 1225170
-	Included in corner stanchion repair kit CS right anodized 1225171

Hemlok rivet KL-BER8.8-10.8mm



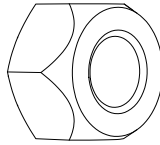
Number	Remarks
-	Included in corner stanchion repair kit CS left anodized 1225170
-	Included in corner stanchion repair kit CS right anodized 1225171

Cylinder screw M8x150



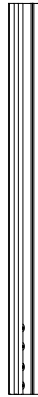
Number	Remarks
-	Included in corner stanchion repair kit CS left anodized 1225170
-	Included in corner stanchion repair kit CS right anodized 1225171

Hexagon nut M8



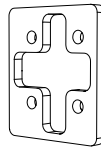
Number	Remarks
-	Included in corner stanchion repair kit CS left anodized 1225170
-	Included in corner stanchion repair kit CS right anodized 1225171

Slider 37 stanchion



Number	Remarks
-	Included in repair kit corner stanchion CS left natural 1225176
-	Included in repair kit corner stanchion CS right natural 1225177

Spacer plate



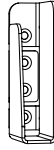
Number	Remarks
-	Included in repair kit corner stanchion CS left natural 1225176
-	Included in repair kit corner stanchion CS right natural 1225177

Slat pocket left / right side long



Number	Remarks
-	Included in repair kit corner stanchion CS left natural 1225176
-	Included in repair kit corner stanchion CS right natural 1225177

Top part slat pocket upside front right / back left



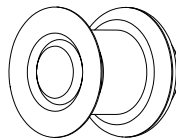
Number	Remarks
-	Included in repair kit corner stanchion CS left natural 1225176

Top part slat pocket upside front left / back right



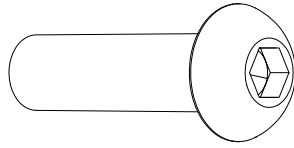
Number	Remarks
-	Included in repair kit corner stanchion CS right natural 1225177

BS rivet, KB4.8-6.8mm



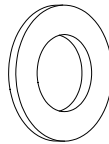
Number	Remarks
-	Included in repair kit corner stanchion CS left natural 1225176
-	Included in repair kit corner stanchion CS right natural 1225177

Fillister head screw with internal hex M16x60



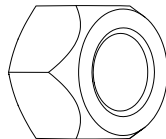
Number	Remarks
1181096	

Washer B17



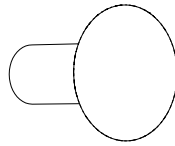
Number	Remarks
-	Included in repair kit corner stanchion CS left natural 1225176
-	Included in repair kit corner stanchion CS right natural 1225177

Hexagon nuts M 16



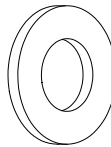
Number	Remarks
-	Included in repair kit corner stanchion CS left natural 1225176
-	Included in repair kit corner stanchion CS right natural 1225177

Carriage bolt without nut M10x25



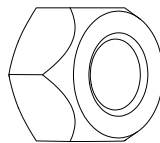
Number	Remarks
-	Included in repair kit corner stanchion CS left natural 1225176
-	Included in repair kit corner stanchion CS right natural 1225177

Washer A10.5



Number	Remarks
-	Included in repair kit corner stanchion CS left natural 1225176
-	Included in repair kit corner stanchion CS right natural 1225177

Hexagon nut M10



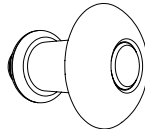
Number	Remarks
-	In repair kit 1225176
-	In repair kit 1225177

Hinged bearing



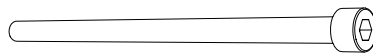
Number	Remarks
-	In repair kit 1225176
-	In repair kit 1225177

Hemlok rivet KL-BER8.8-10.8mm



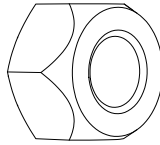
Number	Remarks
-	In repair kit 1225176
-	In repair kit 1225177

Cylinder screw M8x150



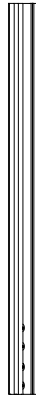
Number	Remarks
-	In repair kit 1225176
-	In repair kit 1225177

Hexagon nut M8



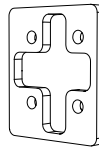
Number	Remarks
-	In repair kit 1225176
-	In repair kit 1225177

Slider 37 stanchion



Number	Remarks
-	Included in repair kit corner stanchion BWS left anodized 1225172
-	Included in repair kit corner stanchion BWS right anodized 1225175

Spacer plate



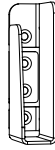
Number	Remarks
-	Included in repair kit corner stanchion BWS left anodized 1225172
-	Included in repair kit corner stanchion BWS right anodized 1225175

KIT 2, BW stop front-right / back-left



Number	Remarks
-	Included in repair kit corner stanchion BWS left anodized 1225172
-	Included in repair kit corner stanchion BWS right anodized 1225175

Top part slat pocket upside front right / back left side



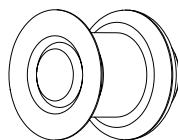
Number	Remarks
-	Included in repair kit corner stanchion BWS left anodized 1225172

Top part slat pocket upside front left / back right side



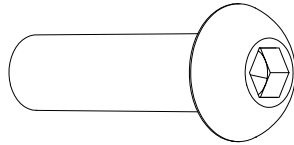
Number	Remarks
-	Included in repair kit corner stanchion BWS right anodized 1225175

BS rivet, KB4.8-6.8mm



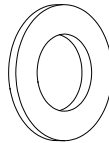
Number	Remarks
-	Included in repair kit corner stanchion BWS left anodized 1225172
-	Included in repair kit corner stanchion BWS right anodized 1225175

Fillister head screw with internal hex M16x60



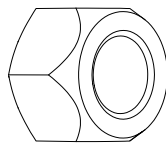
Number	Remarks
-	Included in repair kit corner stanchion BWS left anodized 1225172
-	Included in repair kit corner stanchion BWS right anodized 1225175

Washer B17



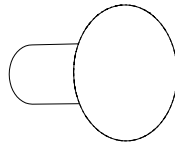
Number	Remarks
-	Included in repair kit corner stanchion BWS left anodized 1225172
-	Included in repair kit corner stanchion BWS right anodized 1225175

Hexagon nuts M 16



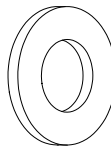
Number	Remarks
-	Included in repair kit corner stanchion BWS left anodized 1225172
-	Included in repair kit corner stanchion BWS right anodized 1225175

Carriage bolt without nuts M10x25



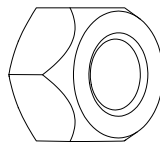
Number	Remarks
-	Included in repair kit corner stanchion BWS left anodized 1225172
-	Included in repair kit corner stanchion BWS right anodized 1225175

Washer A10.5



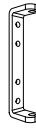
Number	Remarks
-	Included in repair kit corner stanchion BWS left anodized 1225172
-	Included in repair kit corner stanchion BWS right anodized 1225175

Hexagon nut M10



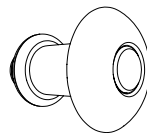
Number	Remarks
-	Included in repair kit corner stanchion BWS left anodized 1225172
-	Included in repair kit corner stanchion BWS right anodized 1225175

Hinged bearing



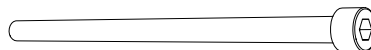
Number	Remarks
-	Included in repair kit corner stanchion BWS left anodized 1225172
-	Included in repair kit corner stanchion BWS right anodized 1225175

Hemlok rivet KL-BER8.8-10.8mm



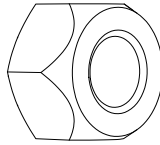
Number	Remarks
-	Included in repair kit corner stanchion BWS left anodized 1225172
-	Included in repair kit corner stanchion BWS right anodized 1225175

Cylinder screw M8x150



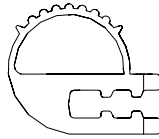
Number	Remarks
-	Included in repair kit corner stanchion BWS left anodized 1225172
-	Included in repair kit corner stanchion BWS right anodized 1225175

Hexagon nut M8



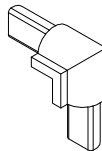
Number	Remarks
-	Included in repair kit corner stanchion BWS left anodized 1225172
-	Included in repair kit corner stanchion BWS right anodized 1225175

Sealing portal outside



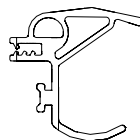
Number	Remarks
-	Included in repair kit for portal complete 1098016
-	Included in repair kit for portal left 1139692
-	Included in repair kit for portal right 1139693
1214932	-

Sealing bracket door

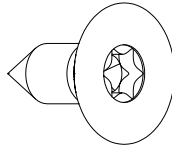


Number	Remarks
-	Included in repair kit for portal complete 1098016
-	Included in repair kit for portal left 1139692
-	Included in repair kit for portal right 1139693
250-53.004	-

Sealing door intermediate



Number	Remarks
-	Included in repair kit for portal complete 1098016
-	Included in repair kit for portal left 1139692
-	Included in repair kit for portal right 1139693

Countersunk-head tapping screw 3.5x9.5

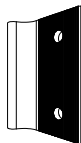
Number	Remarks
-	Included in repair kit for portal complete 1098016
-	Included in repair kit for portal left 1139692
-	Included in repair kit for portal right 1139693

Hinged bearing



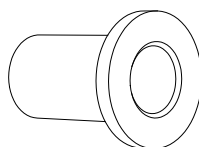
Number	Remarks
-	Included in repair kit mono-joint for door hinge anodized 1151331
-	Included in repair kit mono-joint for door hinge natural 1151332

Mono-joint



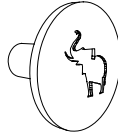
Number	Remarks
-	Included in repair kit mono-joint for door hinge anodized 1151331
-	Included in repair kit mono-joint for door hinge natural 1151332

Plastic bush



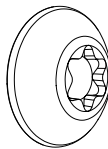
Number	Remarks
-	Included in repair kit mono-joint for door hinge anodized 1151331
-	Included in repair kit mono-joint for door hinge natural 1151332

Knurled bolt M8x14



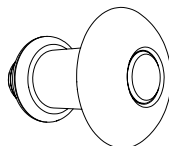
Number	Remarks
-	Included in repair kit mono-joint for door hinge anodized 1151331
-	Included in repair kit mono-joint for door hinge natural 1151332

Sleeve nut M8x12



Number	Remarks
-	Included in repair kit mono-joint for door hinge anodized 1151331
-	Included in repair kit mono-joint for door hinge natural 1151332

Hemlok rivet KL-BER8.8-10.8mm



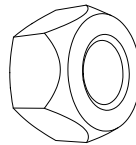
Number	Remarks
-	Included in repair kit mono-joint for door hinge anodized 1151331
-	Included in repair kit mono-joint for door hinge natural 1151332

Cylinder screw M8x150



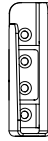
Number	Remarks
-	Included in repair kit mono-joint for door hinge anodized 1151331
-	Included in repair kit mono-joint for door hinge natural 1151332

Nut M8



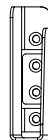
Number	Remarks
-	Included in repair kit mono-joint for door hinge anodized 1151331
-	Included in repair kit mono-joint for door hinge natural 1151332

Slat pockets front side right / back side left



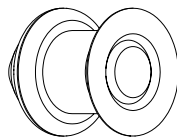
Number	Remarks
-	Included in repair kit 1199502

Slat pockets front side left / back side right

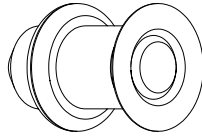


Number	Remarks
-	Included in repair kit 1199502

Countersunk head rivet KB5.8-7.8mm

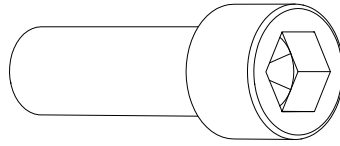


Number	Remarks
-	Included in repair kit 1199502

Countersunk head rivet KB3.17-12.07mm

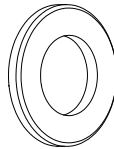
Number	Remarks
-	Included in repair kit 1199502

Cylinder screw M16x50



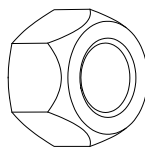
Number	Remarks
-	Included in mounting kit 203-53.120

Washer B17



Number	Remarks
-	Included in mounting kit 203-53.120

Nut M16



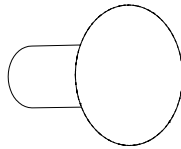
Number	Remarks
-	Included in mounting kit 203-53.120

Slider front / back, RWKL-LBW



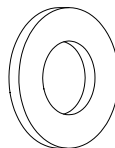
Number	Remarks
-	Included in mounting kit 203-53.120

Carriage bolt M10x25



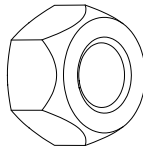
Number	Remarks
-	Included in mounting kit 203-53.120

Washer A10.5



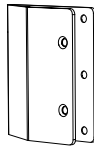
Number	Remarks
-	Included in mounting kit 203-53.120

Nut M10



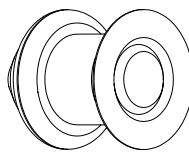
Number	Remarks
-	Included in mounting kit 203-53.120

Centering angle, LBW tail board



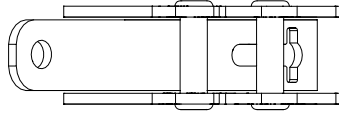
Number	Remarks
-	Included in mounting kit 203-53.120

BS rivet countersunk head, KB-5.8-7.8mm



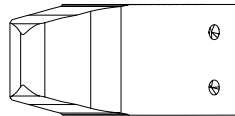
Number	Remarks
-	Included in mounting kit 203-53.120

Counter bearing of locking upside left/right



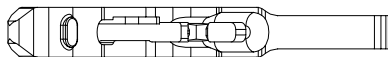
Number	Remarks
-	Included in repair kit 1151332

Locking cams upside left/right



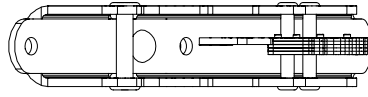
Number	Remarks
-	Included in repair kit 1151332

Hand lever downside left/right



Number	Remarks
-	Included in repair kit 1151332

Counter bearing of locking downside left/right



Number	Remarks
-	Included in repair kit 1151332

Revision status

Revision status	Kind of change	Date	Name
00	New creation of spare part list	23 July 2018	Dingler / Maier
01	Spacer plate was removed from the add-on parts	21 September 2018	Dingler / Maier